

# WESTPORT

## PUBLIC SCHOOL

EXCELLENCE IN A CARING ENVIRONMENT



### Monday 3 February

Welcome back to all students, staff and families for 2020 at Westport Public School. I trust that everyone has had a restful break and is ready for another exciting year of learning at our fantastic school.

Firstly, I would acknowledge how wonderful and new uniform looks. The students are very proud and really like the new design. Thank you again to Mrs Osborne and our wonderful P&C for working so hard to implement the consultation and implementation process. It is still perfectly fine to be wearing our old uniform during the transition period. I would also like to thank parents for their patience during this time as it can take longer to process so many new orders.

We are starting the year off with 18 classes reflecting the continued growth we have experienced at Westport Public School. Our current enrolment is around 406 and I believe this will increase over the course of the year. Our classes are as follows:

K-Flame – Mrs Bendall  
K-Jacaranda – Mrs Lawes  
K-Wattle – Mrs Frazer  
Ironbark – Mr McKenzie  
1-Banksia – Mr Weaver  
1-Acacia – Miss Walton and Mrs Johnston  
1-Lillypilly – Miss Harland  
2-Bluegum – Mrs Slade  
2-Paperbark – Mrs Rudd  
2/3-Eucalyptus – Ms Hurrell  
3-Bottlebrush – Mrs Burton  
3-Redgum – Mr Pettitt  
4-Waratah – Ms Chivas  
4-Macadamia – Mrs Bailey  
5-Melaleuca – Ms Moore  
5-Hibiscus – Mrs Eichler and Mrs Auswild  
6-Frangipani – Mrs Urquhart  
6-Grevillia – Mr Ainsworth

As always, my highlight has been visiting classrooms and the smiles on our wonderful student's faces. Looking forward to an amazing year.

Have a great week.

**Tony Johnston**  
**Principal**

### Coming Events for Term 1

Tuesday 4 February	Kindergarten Start
Thursday 6 February	Swimming Carnival
Wednesday 12 February	P & C Meeting in the Staff Room at 6:15pm
Thursday 13 February	HCH Swimming Carnival

### Term 1 Assembly Timetable – Tuesday at 1 pm in the School Hall

Kindergarten – Year 2	Year 3 – Year 6
	Week 2 – 6 Grevillea
Week 3 - TBA	Week 4 – 6 Frangipani
Week 5 - TBA	Week 6 – 5 Hibiscus
Week 7 - TBA	Week 8 – 5 Melaleuca
Week 9 - TBA	Week 10 – 4 Waratah
Week 11 – Bronze Awards	

### School Visitors

All visitors to the school must report to the office. This includes parents that are dropping off or picking students off during class times.

Late students: Parent accompanies student to the office to sign them in. Students will be given a late slip which they will take to their teacher. Parents **are not** to accompany students to their class.

Picking up students early: Parents are to present at the office to sign the student/s out. Administration staff will then arrange for the student to come and meet the parent in the reception area of the office. Please **do not** go to individual classes to collect your child/ren.

These processes reduce the amount of disruptions to teaching and also monitoring who is on the school site. This is a security and Health and Safety requirement and we appreciate your help in this matter.



## Generous Donation from Aldi Port Macquarie

Westport Public School was selected by our local Aldi store to receive a \$100 donation of school supplies. Aldi Assistant Store Manager Grant Brown, Store Management Trainee Ben Norton and Store Assistant Charlotte Sinclair presented our school leaders, Brooke, Emily, Jett and Zach with a huge array of books, pencils, textas, pens, whiteboard markers and coloured pens to be shared among our classrooms.

Thank you to Aldi for being a friend to our school.



## First Day 2020



## P & C

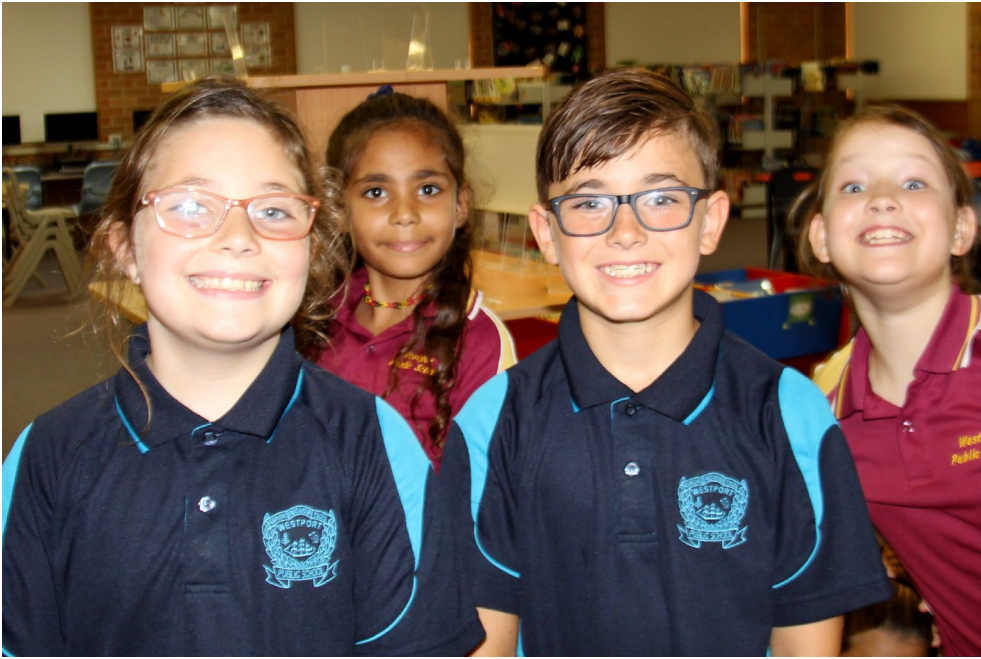
Happy 2020! A big welcome to all the new students and parents. We have some exciting events planned for this year.

Our first meeting of the year will be on Wednesday 12 February in the School Staff Room at 6:15pm. All parents/carers are welcome to attend and hear about what is happening around the school, propose ideas and discuss matters of interest. New members and volunteers are always welcome and are needed for 2020.

During Term 1 the P&C will be organising the Colour Run. Last year we all had a fantastic afternoon of running around obstacle courses and getting sprayed with colour! To make it a big success again, the P&C will be looking for more fantastic volunteers, so please get involved and support your students and school. Your time and generosity will always be greatly appreciated.







A





# School Community Charter

 **Collaborative. Respectful. Communication.**

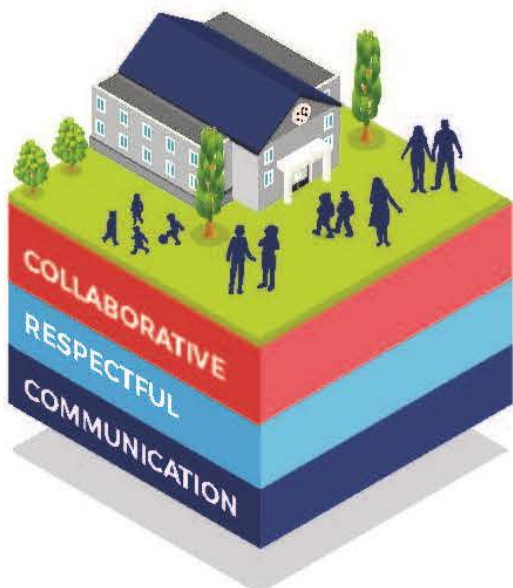
The following School Community Charter outlines the responsibilities of parents, carers, educators and school staff in NSW public schools to ensure our learning environments are collaborative, supportive and cohesive.

## What our schools provide

NSW public schools work to create positive environments for students, staff and the entire school community that support student learning. We strive to ensure that every student is known, valued and cared for.

**The best education happens when parents and schools work together.**

The School Community Charter aligns with the NSW Department of Education Strategic Plan 2018 – 2022.



## Positive environments

It is important that our NSW public schools are positive environments and that parents and carers are kept informed of students' progress and school announcements.

Parents and carers can expect:

- To be welcomed into our schools to work in partnership to promote student learning.
- Communication from school staff will be timely, polite and informative.
- Professional relationships with school staff are based on transparency, honesty and mutual respect.
- To be treated fairly. Tolerance and understanding are promoted as we respect diversity.

**Ensuring respectful learning environments for all members of NSW Public Schools communities.**

We treat each other with **respect**

We **prioritise** the wellbeing of all students and staff

**Unsafe behaviour** is not acceptable in our schools

We work **together** with the school





We create  
**collaborative**  
learning  
environments

We  
all play  
**our part**

We work  
**in partnership**  
to promote  
student  
learning

## Communicating with our schools

Our staff will find a time to talk to you when they can give you their full attention. Please remember that while our staff are in class or dealing with other matters, they may not be available to answer your questions immediately.

Our schools and communities will make sure that written communication is appropriate, fair and easy to read. We encourage you to use email and social media appropriately to connect with your school and stay up-to-date with up-coming events in the school community.

Our guide for parents, carers and students provides useful information about the complaints process:  
[education.nsw.gov.au/about-us/rights-and-accountability/complaints-compliments-and-suggestions/guide-for-parents-carers-and-students](https://education.nsw.gov.au/about-us/rights-and-accountability/complaints-compliments-and-suggestions/guide-for-parents-carers-and-students)

## Respectful communication is a right

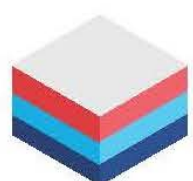
In all workplaces people have the right to feel respected. Unacceptable and offensive behaviour has no place in our school communities.

To ensure the wellbeing of students, staff and the community in our schools, steps will be taken to address unacceptable behaviour. This may include restricting contact with the school community or, in more serious cases, referral to NSW Police.



### Unacceptable behaviour may include but is not limited to:

- Aggressive or intimidating actions, such as violence, threatening gestures or physical proximity.
- Aggressive or intimidating language, including the use of obscenities, making sexist, racist or derogatory comments or using a rude tone.
- Treating members of the school community differently due to aspects such as their religion or disability.
- Inappropriate and time wasting communication.



**Collaborative.  
Respectful.  
Communication.**

**School Community Charter**

[education.nsw.gov.au](https://education.nsw.gov.au)





We create  
**collaborative**  
learning  
environments

We  
all play  
**our part**

We work  
**in partnership**  
to promote  
student  
learning

## Communicating with our schools

Our staff will find a time to talk to you when they can give you their full attention. Please remember that while our staff are in class or dealing with other matters, they may not be available to answer your questions immediately.

Our schools and communities will make sure that written communication is appropriate, fair and easy to read. We encourage you to use email and social media appropriately to connect with your school and stay up-to-date with up-coming events in the school community.

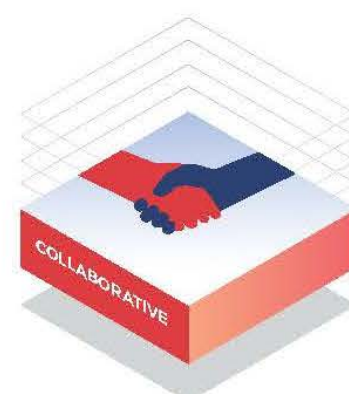
Our guide for parents, carers and students provides useful information about the complaints process:

[education.nsw.gov.au/about-us/rights-and-accountability/complaints-compliments-and-suggestions/guide-for-parents-carers-and-students](https://education.nsw.gov.au/about-us/rights-and-accountability/complaints-compliments-and-suggestions/guide-for-parents-carers-and-students)

## Respectful communication is a right

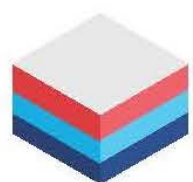
In all workplaces people have the right to feel respected. Unacceptable and offensive behaviour has no place in our school communities.

To ensure the wellbeing of students, staff and the community in our schools, steps will be taken to address unacceptable behaviour. This may include restricting contact with the school community or, in more serious cases, referral to NSW Police.



### Unacceptable behaviour may include but is not limited to:

- Aggressive or intimidating actions, such as violence, threatening gestures or physical proximity.
- Aggressive or intimidating language, including the use of obscenities, making sexist, racist or derogatory comments or using a rude tone.
- Treating members of the school community differently due to aspects such as their religion or disability.
- Inappropriate and time wasting communication.



**Collaborative.  
Respectful.  
Communication.**

**School Community Charter**

[education.nsw.gov.au](https://education.nsw.gov.au)





# Slow down to 40km/hour when bus lights flash

Did you know that by law you must slow down to 40km/h when bus lights are flashing?

As our students start the 2020 school year, the NSW Government and Busways is reminding parents, teachers and other motorists about this law which is designed to keep our kids safe.

Lights begin to flash when the bus stops and the doors open, and they keep flashing for 20 seconds after the doors close. Children are most at risk in the minutes after they get off the bus as they can be unpredictable in their movements.

Drivers should look out for children who are crossing the road or waiting to cross. Lights flash on buses to warn motorists that buses are picking up and dropping off children. By law, a driver must not overtake or pass a bus with flashing lights at more than 40km/h.

Drivers caught driving over the 40km/hr requirement face speeding fines and a loss of demerit points, depending on the speed they're travelling. If they remain at 60km/h in a 60km zone, they could face fines of up to \$275 and a loss of three demerit points.

As young children are still developing skills around road safety, drivers should take care around bus stops where children might want to walk across the road.

Motorists can help reduce the risk of a crash and keep children safe by:

- Slowing down to 40km/h when bus lights are flashing,
- Looking out for children crossing the road near bus stops, in [school zones](#) or along bus routes, and
- Giving way to buses when they merge back into traffic.

## Where Creativity Grows

For all ages and abilities!

### FINE ART CLASSES

TERM 1 - BEGINS 10 FEBRUARY 2020

Fine Art Classes at The Seed provide an environment of expressive and creative innovation in a friendly, relaxed environment. Students will be introduced to new artists, learn about their unique style and create artworks inspired by them. Students will gain creative skills, hand/eye coordination, listening and focusing skills, confidence and build lasting friendships. We accept Kids Creative vouchers and can invoice Plan managers or individuals. We are an NDIS provider.

- Primary classes - ages 6-12  
Monday, Tuesday, Wednesday and Friday  
3.30-5.00pm
- Primary All abilities classes  
Thursday 3.30 - 5pm
- Adults All abilities art classes - ages 13+  
Wednesdays 10am - 12pm  
Thursdays 1pm - 3pm
- Seedlings classes - 5 & under  
Fridays 10.45am - 11am



Check out our website for full details



2/44 Gordon Street Port Macquarie  
[www.theseedcreativeworkshops.com](http://www.theseedcreativeworkshops.com)  
[info@theseedcreativeworkshops](mailto:info@theseedcreativeworkshops)  
Ph: 0447 114 796 or 0402 070 404



Excellence in  
Child Dental Services



Call today on **1300 65 16 25**

All children under 18 yrs of age can receive **FREE DENTAL CARE**

PARENTS **DO NOT** NEED TO HOLD A PENSION CARD OR HEALTH CARE CARD FOR THEIR CHILD TO BE ELIGIBLE.

Child Dental Benefits Scheme CDBS Vouchers accepted at all MNCLHD DENTAL CLINICS



Please call **1300 65 16 25** if you would like your child to have a check-up.  
IF THEY ARE IN PAIN OR HAVE DENTAL PROBLEMS THEY WILL BE PRIORITISED  
WHEN YOU CALL **1300 65 16 25** TO BE TRIAGED.

OUR MID NORTH COAST LOCAL HEALTH DISTRICT DENTAL CLINICS ARE SITUATED IN:

<b>PORT MACQUARIE</b>	Port Macquarie Community Health Campus Morton Street (Old Hospital)	Port Macquarie
<b>WAUCHOPE:</b>	Wauchope Community Health Campus High Street (adjacent to hospital)	Wauchope
<b>LAURIETON:</b>	Camden Haven Community Health Campus Laurie Street	Laurieton
<b>KEMPSEY:</b>	Kempsey Community Health Campus River Street	Kempsey
<b>COFFS HARBOUR</b>	Coffs Harbour Health Campus Pacific Highway	Coffs Harbour
<b>NAMBUCCA HEADS</b>	Nambucca Health One, Fred Brain Ave	Nambucca Heads

Coffs Harbour Network Oral Health Services  
Locked Bag 812 Coffs Harbour 2450  
Tel 1300 651 625  
Website <http://mnclhd.health.nsw.gov.au/>

Hastings Macleay Network Oral Health Services  
PO Box 126 Port Macquarie 2444  
Tel 1300 651 625  
Website <http://mnclhd.health.nsw.gov.au/>





**29<sup>th</sup> Annual Nestle Mini Tri**  
**Saturday 8th February 2020**  
 Trial Bay Gaol  
 Commencing 10.00 am



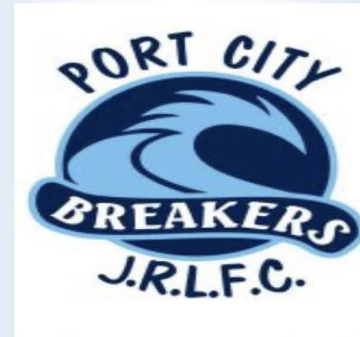
Race 1: 10.00 am – ‘Enticer’ - 14 years to adults *of any age*  
*(Entry available to individuals or teams of 3)*  
*(Includes: 300 metre swim, 9 kms cycle, 2 kms run)*  
 Race 2: 11.15 am – 11, 12 & 13 years  
 Race 3: 12.30 pm – 8, 9 & 10 years  
 Race 4: 1.15 pm - 6 & 7 years  
 Race 5: 1.35 pm – 5 years  
*\*Presentation at approximately 2.30 pm\**



**31<sup>th</sup> Annual Trial Bay Triathlon**  
**Sunday 9th February 2020**  
 Commencing 7:30am

500m swim, 23 km cycle, 6km run

Entries open online from early November 2019  
 Online entries close February 4, 2020  
 Entries for Enticer & junior events can also be made on the day up to 1 hour before each race.  
 More details at: [www.trialbaytri.com.au](http://www.trialbaytri.com.au) and [www.coastline.com.au](http://www.coastline.com.au)  
 Find us on Facebook: Trial Bay Triathlon Inc



## 2020 Rego Dates

**Saturday 1st February & Saturday 22nd February**  
**11am to 1pm @ Hibbard Sports Club**

**Mixed Tackle U6 to U12**

**Boys Tackle U13 to U16**

**Girls League Tag U13, U15, U17**

**Girls Tackle U17**

**\$140 Rego Fee Includes:**  
**Training Shirt & Shorts, Playing Socks & Shorts**  
**plus a Breakers Backpack**



For more information,  
 please contact  
[portcitybreakersjrl@outlook.com](mailto:portcitybreakersjrl@outlook.com)



## SCHOOL SAFETY NOTICE TO DRIVERS



**CHILDREN  
CROSSING**

In the interest of CHILD SAFETY there is NO EXCUSE for disobeying traffic control signs and Road Rules in the vicinity of a school. Please read and understand the following traffic controls around your school zone.

### NO STOPPING

Under no circumstances are you permitted to stop on a length of road to which a NO STOPPING sign applies.

(Penalty: \$344.00 + 2 demerit points) each time you disobey a NO STOPPING sign.



### NO PARKING

You are permitted to stop in a NO PARKING zone only while you are engaged in dropping off or picking up passengers. You must not stop for more than two minutes. You must stay within three metres of your vehicle.

(Penalty: \$191.00 + 2 demerit points) each time you disobey a NO PARKING sign.

### BUS ZONE

You are not permitted to stop in a BUS ZONE unless you are driving a bus.

(Penalty: \$344.00 + 2 demerit points) each time you stop in a BUS ZONE.



### CHILDREN'S CROSSING

You are not permitted to stop within 20 metres before the crossing and 10 meters after the crossing.

(Penalty: \$457.00 + 2 demerit points) each time you stop on/near a children's crossing.

### DOUBLE PARKING

A driver must not stop on a road between the centre of the road and another vehicle that is parked at the side of the road.

(Penalty: \$344.00 + 2 demerit points) each time you double park.



**THE COST OF TAKING YOUR CHILDREN TO SCHOOL DEPENDS ENTIRELY ON YOU**



Hearts 'n Minds  
Learning

in collaboration with



## Parents and Carers Meeting

Does your child have social, learning or intellectual difficulties?

Are you looking for encouragement and reassurance in helping them reach their full potential?

<b>CAMDEN HAVEN</b>	<b>Friday 14<sup>th</sup> February</b>	<b>10am</b>
Sandbar Cafe 3/621 Ocean Dr, North Haven NSW 2443		
<b>PORT MACQUARIE</b>	<b>Friday 21<sup>st</sup> February</b>	<b>10am</b>
The Bandwagon Cafe, 76 William St, Port Macquarie		
<b>WAUCHOPE</b>	<b>Friday 28<sup>th</sup> February</b>	<b>10am</b>
Waterman's Cafe 2/56 High St, Wauchope		

RSVP: Glenda Cooper 0402 998 316 [glenda@heartsmindslearning.com.au](mailto:glenda@heartsmindslearning.com.au)  
 Prue Hampton 0437 102 552 [abilitylinks.port@boorooongendjugun.com.au](mailto:abilitylinks.port@boorooongendjugun.com.au)

- Meet others who also look after special needs people
- Share the highs and lows, the joys and not-so-joys, the challenges and delights
- Tea/Coffee provided

Look forward to seeing you there,

*Glenda Cooper*

(Educational Therapist, Founder and Director of Hearts 'N Minds Learning)



# Live Life Well @ School

## Healthy Lunchbox Snack Ideas



- Hummus and vegetable sticks
- Pikelets
- Zucchini slice
- Boiled eggs
- Yoghurt
- Savoury scones
- Plain air popped popcorn
- Roasted chickpeas

For more information: [www.healthylunchbox.com.au](http://www.healthylunchbox.com.au)



## Tennis Lessons

Hi everyone hope you all had an enjoyable holiday and have been watching the Tennis.

Lessons and Comps will be starting back tomorrow as normal, if you would like to enrol in a

new class or comp please let me know by email ,text or phone on 0427466760.

Look forward to seeing you all on the courts.

Thanks Greg,



## Come Play Rugby

## with the Port Macquarie Pirates

Pirates Kids U6-U12's Boys & Girls

Registration Opens Feb 19th

Training Wednesdays 5pm - 6pm Games Friday night all

@Stuart Park Port Macquarie

Please contact Lisa Vogel 0431 093 659 or [mcmercee@hotmail.com](mailto:mcmercee@hotmail.com) for more informations



### Active Recreation

Adventure Quest: [www.blueprintlifecoaching.com.au/adventure](http://www.blueprintlifecoaching.com.au/adventure)  
1st PM Scout Group: [www.1stportmacquarieseascouts.com](http://www.1stportmacquarieseascouts.com)  
Tag League Association Inc: [www.tagleague.com.au](http://www.tagleague.com.au)  
Sprockets PM: [www.sprocketsportmacquarie.com](http://www.sprocketsportmacquarie.com)

### AFL

PMQ Auskick Centre: [www.play.afl/auskick](http://www.play.afl/auskick)  
PMQ Australian Rules Football Club: [www.aflnswact.com.au](http://www.aflnswact.com.au)

### Athletics

PMQ Little Athletics Centre: [www.lansw.com.au](http://www.lansw.com.au)

### Basketball

PM Basketball Assoc: [www.portmacquarie.basketball.net.au](http://www.portmacquarie.basketball.net.au)

### Boating

Flamin' Dragons: [www.flamingdragonsportmacquarie.org.au](http://www.flamingdragonsportmacquarie.org.au)

### Cricknet

For information on below clubs visit: [www.playcricket.com.au](http://www.playcricket.com.au)  
Macquarie Hotel Cricket Club  
Port City Leagues Magpies Cricket Club  
Hastings River District Junior Cricket Association  
PMQ Junior Cricket Club  
Port Pirates Cricket Club

### Dance / Performing Arts

Extreme Dance Studios: [www.extremedancestudios.com.au](http://www.extremedancestudios.com.au)  
Coastal Dance Studio: [www.coastaldanceperformingarts.com](http://www.coastaldanceperformingarts.com)  
ExtravDance Studios: [www.extravadancestudios.com.au](http://www.extravadancestudios.com.au)  
PMQ Performing Arts: [www.pmpartperformingarts.com](http://www.pmpartperformingarts.com)  
PMQ Physie and Dance: [www.portphysieanddance.com.au](http://www.portphysieanddance.com.au)  
La Vive Studios: [www.lavive.net](http://www.lavive.net)  
Port City United Physical Culture Club: [www.pmpphysie.com.au](http://www.pmpphysie.com.au)

### Fitness/Gym/Yoga

PMQ Yoga Friends: <https://yogafriends.business.site>

### Golf

PMQ Golf Club: [www.portmacquariegolf.com.au](http://www.portmacquariegolf.com.au)

### Gymnastics

PMQ Gymnastics Club: [Search Facebook](#)

### Hockey

For information on below clubs visit: [www.hockeynsw.com.au](http://www.hockeynsw.com.au)  
PMQ Hastings Hockey Assoc  
Port City Hockey Club

### Martial Arts

Australian Hapkido Association: [www.hapkidoaustralia.com](http://www.hapkidoaustralia.com)  
Enso Martial Arts: [www.ensomartialarts.com.au](http://www.ensomartialarts.com.au)  
KRMA PM: [www.krmas.com.au](http://www.krmas.com.au)  
Kyokushin Karate PM: [www.portkarate.com](http://www.portkarate.com)  
Jayu Martial Arts Academy: [www.jayu.com.au](http://www.jayu.com.au)  
Ying Yang Martial Arts: [Search Facebook](#)  
Mid Coast Martial Arts Acad: [www.midcoastmartialarts.com.au](http://www.midcoastmartialarts.com.au)

### Netball

For information on below clubs visit: <https://nsw.netball.com.au>  
Port Combined Netball Club  
Hastings Valley Netball Association  
Iona Sports Club Inc

### Rugby League

For information on below clubs visit: [www.playnrl.com/register](http://www.playnrl.com/register)

PMQ Sharks Junior RLFC Inc  
Port City Breakers Junior RLFC

### Rugby Tots

PMQ Rugby tots: [www.rugbytots.com.au](http://www.rugbytots.com.au)  
Thrumster Rugby Tots: [www.rugbytots.com.au](http://www.rugbytots.com.au)

### Rugby Union

For information on below clubs visit: <https://australia.rugby>  
PMQ Pirates Junior Rugby Union Football Club  
Hastings Valley Vikings Rugby Union  
Sense Rugby (Occupational Therapy): [www.senserrugby.com.au](http://www.senserrugby.com.au)  
MNC Rugby Referees: [Search Facebook](#)

### Skate

Planet X PM: [www.planetxportmacquarie.com.au](http://www.planetxportmacquarie.com.au)  
Skate All Day Skateparks: [www.skateallday.com.au](http://www.skateallday.com.au)

### Soccer

For information on below clubs visit:  
[www.northcoastfootball.com.au](http://www.northcoastfootball.com.au)  
Iona Sports Club  
PMQ Football Club  
PMQ United Soccer Club  
Port Saints Soccer Club  
Mid Coast Futsal: [www.midcoastfutsal.com](http://www.midcoastfutsal.com)  
East Coast Futsal: [Search Facebook](#)

### Surfing

PMQ Surf School: [www.portmacquariesurfschool.com.au](http://www.portmacquariesurfschool.com.au)  
PMQ Bodyboarding Association: [pmba.com.au](http://pmba.com.au)  
Soul Surfing: [www.soulsurfing.com.au](http://www.soulsurfing.com.au)

### Surf Life Saving

PMQ Surf Life Saving: [www.pmslsc.com.au](http://www.pmslsc.com.au)  
Tacking Point Surf Life Saving: [www.tackingpointslsc.com.au](http://www.tackingpointslsc.com.au)

### Swimming

PMQ Swimming Club: <https://portmacquarie.swimming.org.au>  
Swift Swim School: [Search Facebook](#)  
Vicki's Swim Centre: [www.vickisswimcentre.com](http://www.vickisswimcentre.com)  
BlueFit: [bluefitswimming.com.au/portmac](http://bluefitswimming.com.au/portmac)

### Tennis

PMQ Tennis Club (Greg Alchin): [www.tennis.com.au/pmtc](http://www.tennis.com.au/pmtc)  
Rawlingsons Tennis Coaching: [www.markrawtennis.com.au](http://www.markrawtennis.com.au)  
PMQ Goodwin Tennis: [www.goodwintennis.com](http://www.goodwintennis.com)

### Touch Football

PMQ Makos Touch Football: [Search Facebook](#)

### Triathlon

PMQ Triathlon Club: [www.portmacriclub.com.au](http://www.portmacriclub.com.au)

### \*How to claim your Active Kids Voucher

1. Visit [service.nsw.gov.au](http://service.nsw.gov.au) and login to your MyServiceNSW account
2. Click on the Active Kids icon on the SERVICE tab
3. Fill out the requested info
4. Register your AKV number with a listed provider







A Group for Aboriginal Families!

Have fun with your child & other Aboriginal families.

Share your culture as well as your parenting ideas and strategies.

Your child will learn how to:

- make new friends
- enjoy a range of activities
- play & socialise with others
- share books
- enjoy finger painting

**Where:**  
Uniting Church  
Hastings Street  
Wauchope

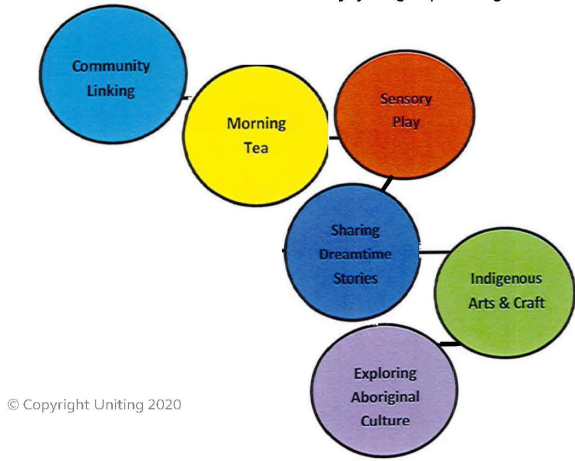
**When:**  
Mondays  
During School Terms

**Time:**  
10am – 12noon

**Morning Tea:**  
Provided Free

**Get in Touch:**  
6581 6600

uniting.org



© Copyright Uniting 2020

Uniting



Come along & join in the fun!

Have fun with your child.

Come along to meet new friends who might be going through the same parenting experiences as you.

Your child will learn how to:

- make new friends
- enjoy a range of activities
- play & socialise with others
- share books
- enjoy finger painting

**Where:**  
Uniting Church  
Hastings Street  
Wauchope

**When:**  
Thursdays  
During School Terms

**Time:**  
10am – 12pm

**Morning Tea:**  
Provided Free

**Get in Touch:**  
6581 6600

uniting.org



© Copyright Uniting 2020

Uniting



Come along & join in the fun!

Have fun with your child.

Come along to meet new friends who might be going through the same parenting experiences as you.

Your child will learn how to:

- make new friends
- enjoy a range of activities
- play & socialise with others
- share books
- enjoy finger painting

**Where:**  
Uniting Church Hall  
Bold Street  
Laurieton

**When:**  
Wednesdays  
During School Terms

**Time:**  
10am – 12pm

**Morning Tea:**  
Provided Free

**Get in Touch:**  
6581 6600

uniting.org



© Copyright Uniting 2020

Uniting



Come along & join in the fun!

Have fun with your child.

Come along to meet new friends who might be going through the same parenting experiences as you.

Your child will learn how to:

- make new friends
- enjoy a range of activities
- play & socialise with others
- share books
- enjoy finger painting

**Where:**  
Uniting Burnside  
7 Sherwood Road  
Port Macquarie

**When:**  
Tuesdays  
During School Terms

**Time:**  
10am – 12noon

**Morning Tea:**  
Provided Free

**Get in Touch:**  
6581 6600

uniting.org



© Copyright Uniting 2020

Uniting